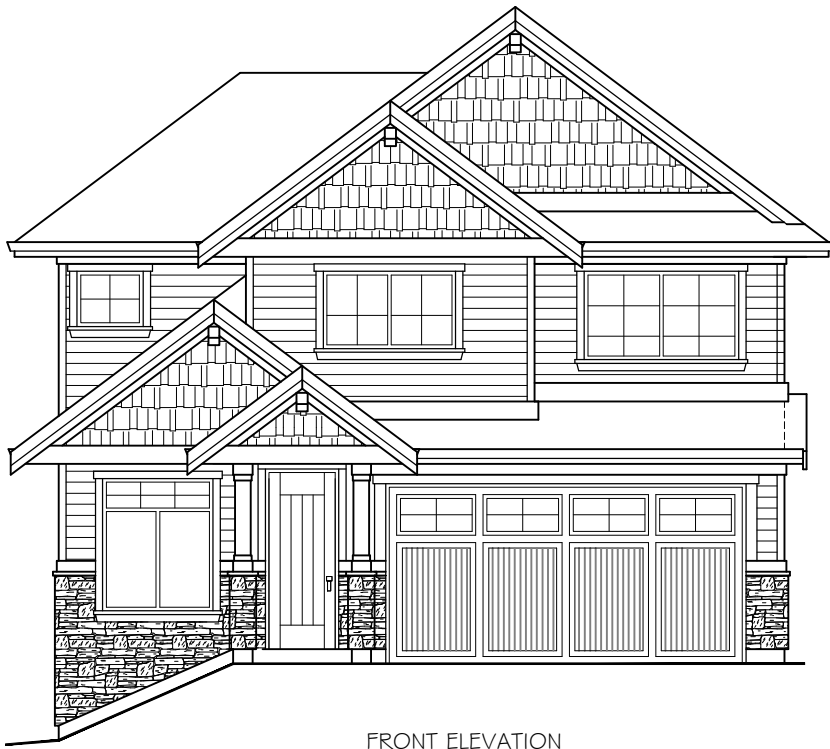
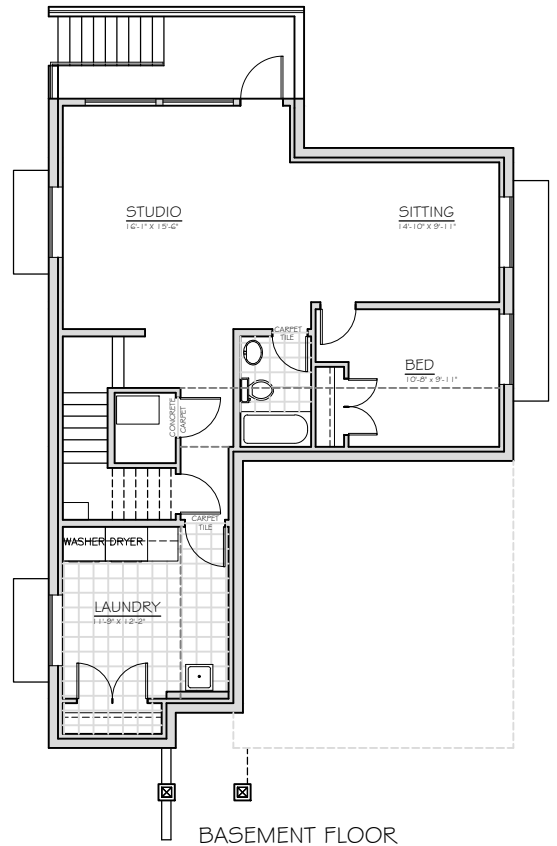


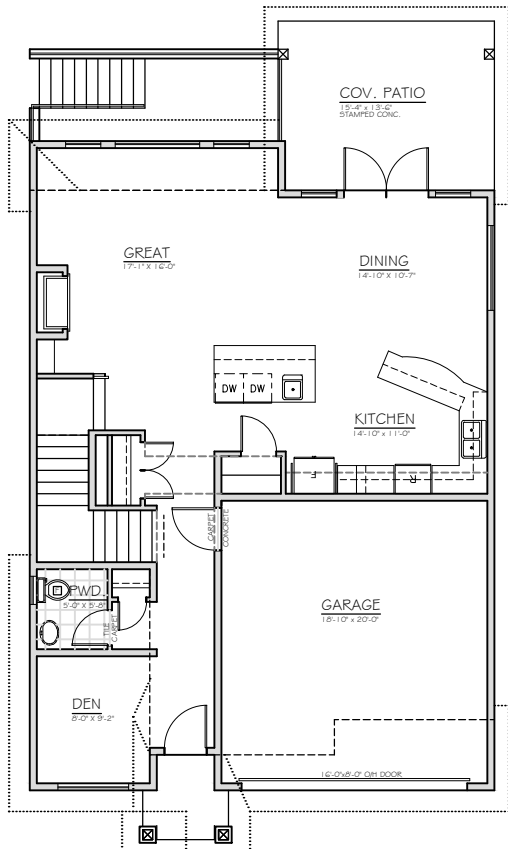
LOT 7 SENDERO- PHASE 3



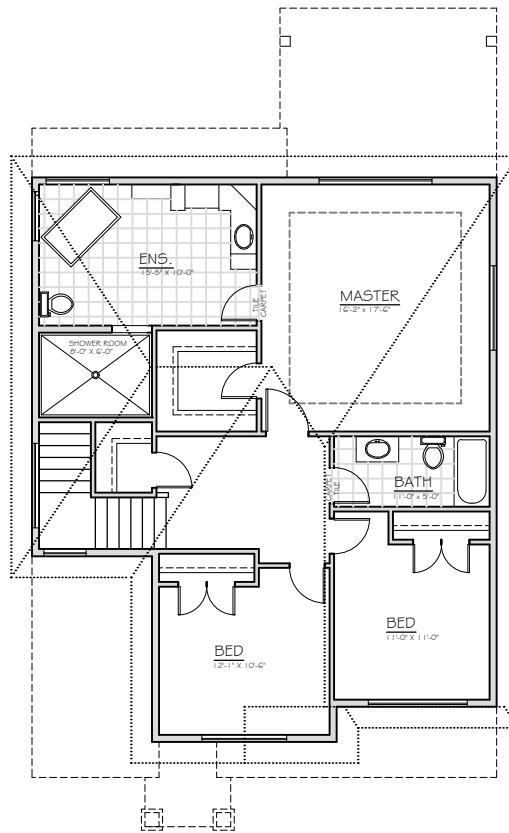
FRONT ELEVATION



BASEMENT FLOOR
LIVING - 1,061 sq. ft.



MAIN FLOOR
LIVING - 1,035 sq. ft.
GARAGE - 416 sq. ft.
TOTAL - 1,451 sq. ft.



UPPER FLOOR
LIVING - 1,123 sq. ft.
STAIRS - 53 sq. ft.
TOTAL - 1,176 sq. ft.

SENDERO CANYON

HOLDEN ROAD, PENTICTON, B.C.

SENDERO CANYON RESERVES THE RIGHT TO MAKE ANY PLAN CHANGES WITH OUT NOTICE. FINAL DIMENSIONS & SQUARE FOOTAGE ARE APPROXIMATE.