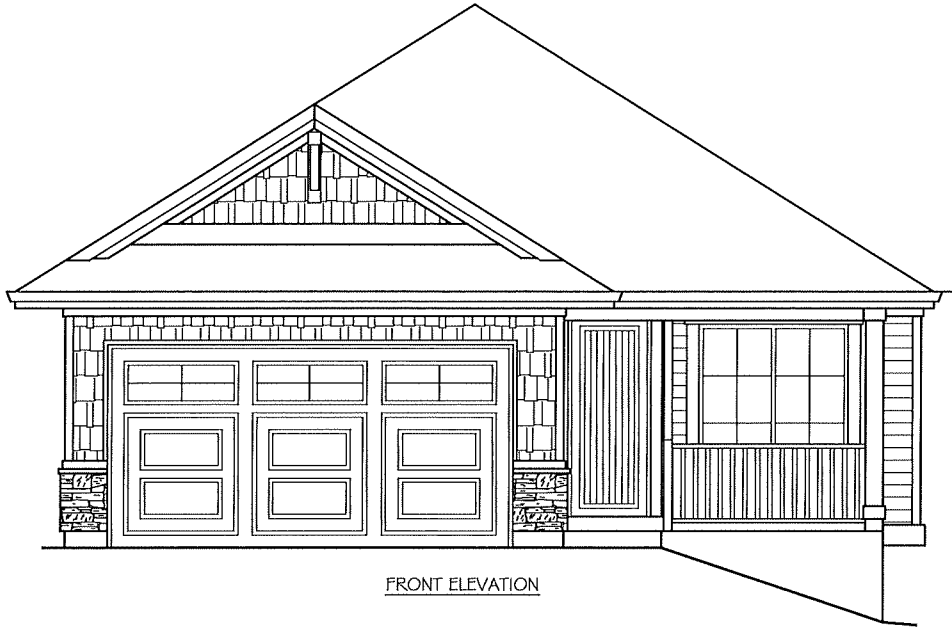
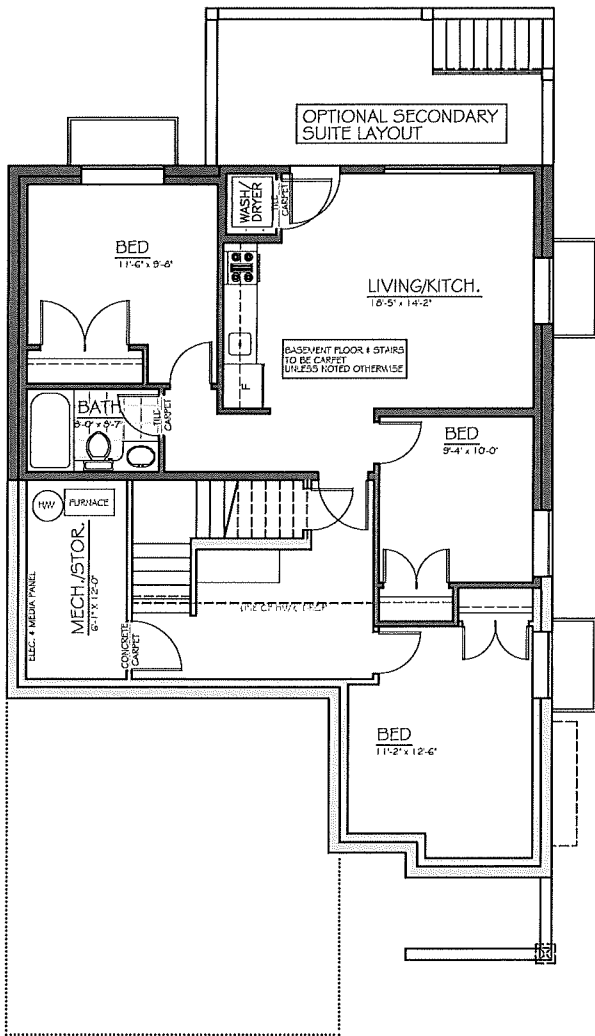


LOT 35 SENDERO - PHASE 3

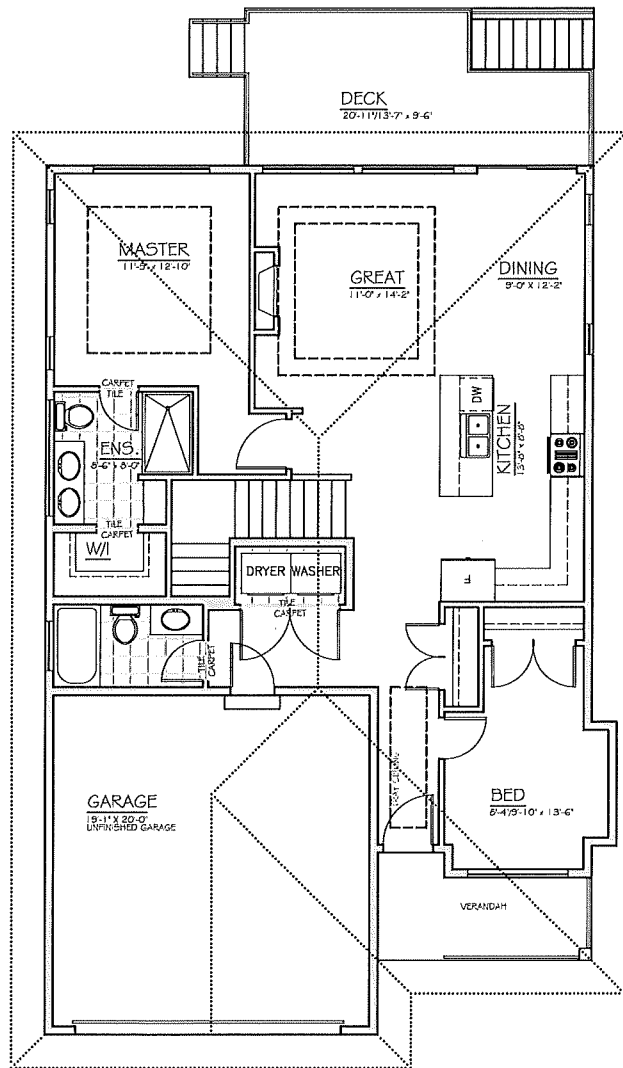


FRONT ELEVATION



BASEMENT FLOOR

LIVING - 486 sq. ft.
SUITE - 701.3 sq. ft.
TOTAL - 1,187.3 sq. ft.



MAIN FLOOR

LIVING - 1,163 sq. ft.
GARAGE - 413 sq. ft.
TOTAL - 1,593 sq. ft.

SENDERO CANYON

HOLDEN ROAD, PENTICTON, B.C.

SENDERO CANYON RESERVES THE RIGHT TO MAKE ANY PLAN CHANGES WITH OUT NOTICE. FINAL DIMENSIONS & SQUARE FOOTAGE ARE APPROXIMATE.