

Sendero Canyon

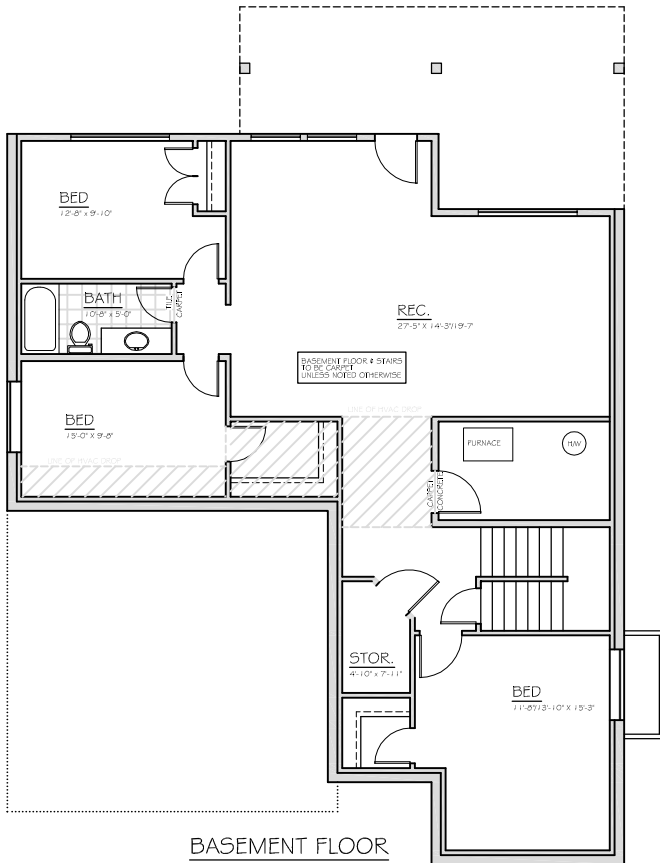
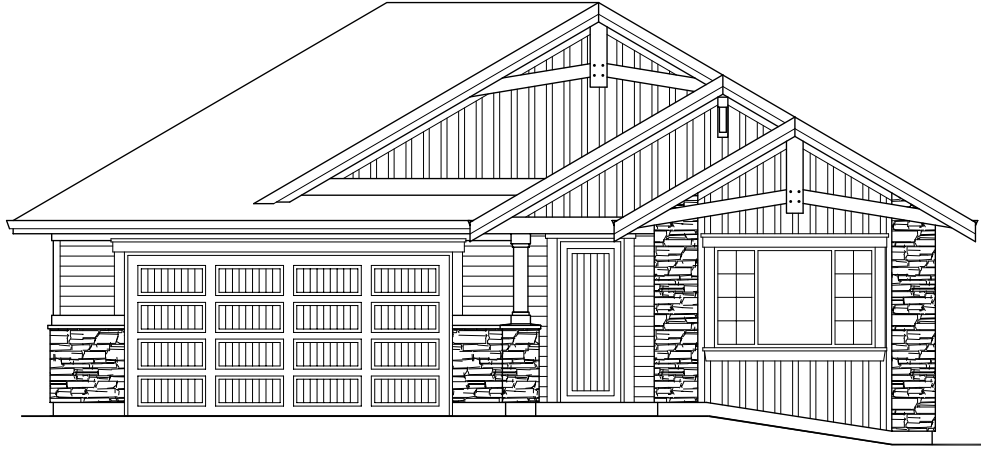
AT PENTICTON

LOT 85

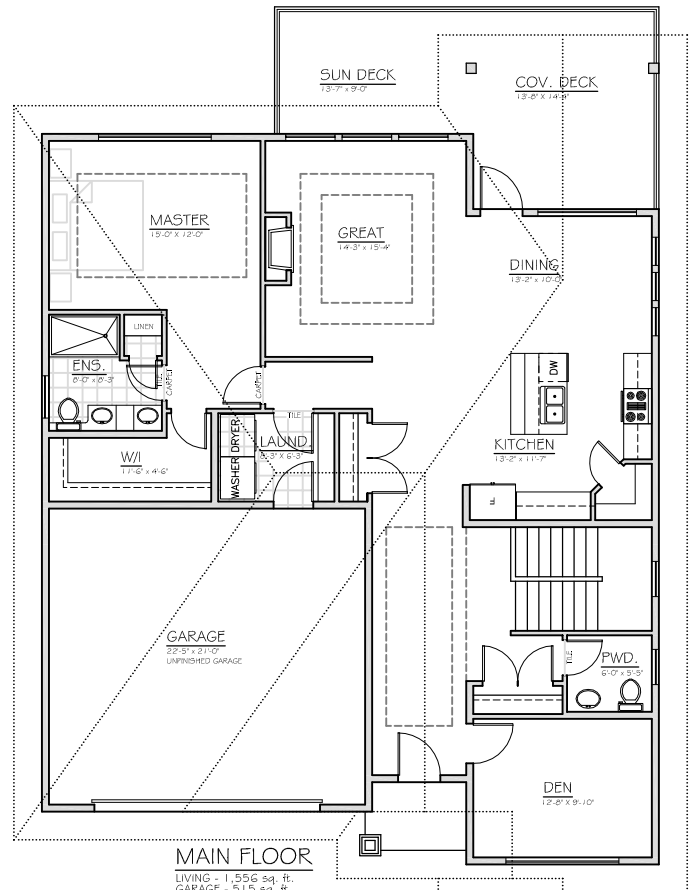
SENDEROCANYON.COM

1113 Syer Road
Penticton, BC

SENDERO CANYON RESERVES THE RIGHT TO MAKE ANY PLAN CHANGES WITHOUT NOTICE. FINAL DIMENSIONS & SQUARE FOOTAGE ARE APPROXIMATE.



BASEMENT FLOOR
BASEMENT - 1,584 sq. ft.
+/- 8'-8" CEILING



MAIN FLOOR
LIVING - 1,556 sq. ft.
GARAGE - 511.5 sq. ft.
+/- 9'-0" CEILING